

®

EROSAMAT

PERMANENT SOIL EROSION CONTROL AND ROOT REINFORCEMENT

EROSAMAT PROVIDES LONG TERM ROOT REINFORCEMENT TO HELP VEGETATION RESIST THE EFFECTS OF EROSION

Applications Roadside ditches • Newly profiled slopes and verges • Banks of ponds, lakes and reservoirs • Channels, spillways, streams and rivers • Landfill and open-cast sites • Railway cuttings and embankments

EROSAMAT

Erosamat is an open matrix of polypropylene fibres, thermally bonded together to create a tough, flexible and long lasting 3 dimensional erosion control mat. The polymer is not degradable and is chemically and microbiologically inert.

Erosamat is suitable for use in all situations where an element of permanent erosion control is needed both on dry slopes or in watercourses. One of the Erosamat range will provide the long-term root reinforcement necessary to help vegetation resist the effects of erosion caused by either wind, rain or flowing water.

Erosamat 3/10 can be laid on dry slopes over the bare ground where it immediately protects the soil from the adverse effects of erosive forces. It can then be seeded and filled with soil to provide excellent surface protection until the roots grow through the mat and become enmeshed within it.

Erosamat 3/20 has an open cusped structure which, when filled with seeded soil above the water line or small gravel below it, provides protection for grass roots until vegetation provides long term erosion control. In high shear stress situations, such as watercourses and overflow channels, CIRIA report No.116 shows that vegetated geomats can withstand double the permitted channel velocity for long term flow rates when compared with non-reinforced grass cover.

Erosamat Type 3 is coloured black to provide UV resistance.

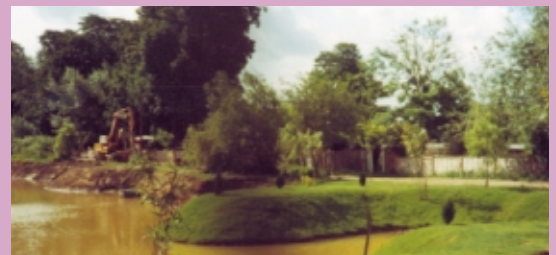
Erosamat 3A is available, to order, as a pre-grown turf for areas that require a high quality instant surface protection.

Erosamat 3/20-B is for high water flow situations. Manufactured with a filling of bitumen and stone chippings, it produces a very heavy mat suitable for use in rivers and fast flowing watercourses.



The benefits of Erosamat from MMG

- ◆ it is lightweight
- ◆ it is easy to handle
- ◆ it is inert and rot proof
- ◆ it is unseen and environmentally friendly
- ◆ it enables vegetation to establish rapidly
- ◆ it prevents seeds from being washed out



Dedicated To The Environment



EROSAMAT

EROSAMAT TYPE 3/10 and 3/20

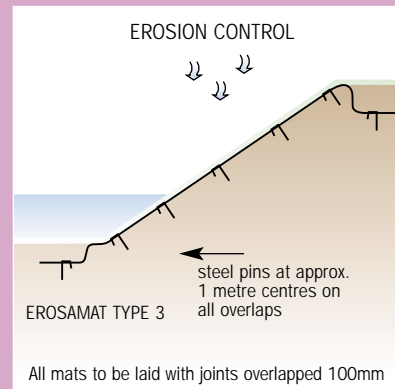
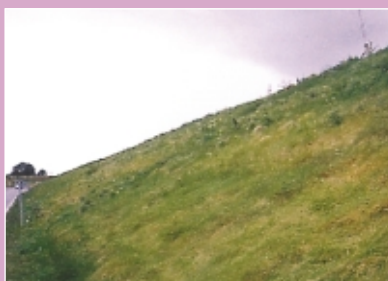
SOIL EROSION CONTROL MATTING

EROSAMAT TYPE 3 is used to protect newly laid topsoil or recently profiled slopes. It is a tough, flexible, cost effective and environmentally friendly product. The roots of the grass growing into the Erosamat matrix will soon provide a solid anchorage to the profiled soil ensuring a permanent root reinforcement for the vegetation which resists soil erosion by both wind and water.

Installation

Erosamat should always be laid with the flatter of the two sides downwards. Fixing is effected using 'J' shaped steel pins at metre centres on the overlaps, in any voids and in anchor trenches at the top and bottom of the slopes.

We offer a design suggestion for the application of all our products. In order to ensure trouble free installation in the shortest possible time **MMG** can provide on-site support during the initial stages of installation.



POLYMER INFORMATION

Polymer type	Polypropylene	
Density	0.93 kg/m ³	ASTM D1505
Melting point	150°C	ASTM D3418
Colour	Black	
U.V. resistance	Stabilised	
Impact resistance	Excellent (even at low temperature)	
Chemical resistance	Highly resistant to all common chemicals	
Bacteria/fungi resistance	Does not support growth	
Life expectancy	120 yrs	
Working temperature	-20 to +80°C	
Health, safety, environment	INERT. No known health hazard. No precautions necessary	

ROLL DIMENSIONS

Type	3/10	3/20
Width	2.0m	2.0m
Length	25m	25m
Weight	40kg	40kg
Roll diameter	0.60m	0.70m
Overlap allowance	5%	5%
Wastage allowance	1%	1%

PROPERTIES

Type	3/10	3/20	
Thickness	10mm	20mm	BSEN 964-1:1995
Thickness at 2kPa	8mm	16mm	BSEN 964-1:1995
Mass/unit area	800g/m ²	800g/m ²	BSEN 965:1995
Tensile strength-longitudinal	1.8kN/m	1.8kN/m	BSEN ISO-10319:1996
Tensile strength-cross direction	0.9kN/m	0.9kN/m	BSEN ISO-10319:1996
Elongation	30-50%	30-50%	BSEN ISO-10319:1996
Void ratio	50%	90%	

The values given are indicative and correspond to nominal results obtained in our laboratories and testing institutes. The right is reserved to make changes without notice at any time.

Allowable tolerances are +/- 10% of the typical value.

NOTE

- 1 The mat can be laid onto a preseeded topsoil or, alternatively, the mat can be filled with topsoil and seed. The latter method gives a better degree of erosion control.
- 2 The mat has sufficient weight for good anchorage and wind resistance.
- 3 For more information please refer to our detailed laying guide.

Manufactured in accordance with the ISO 9002 quality assurance standard.

Get immediate information on the whole range of MMG products from www.mmges.co.uk

Dedicated To The Environment

MMG Civil Engineering Systems Ltd.
St. Germans, King's Lynn, Norfolk. PE34 3ES England.
Telephone: 01553 617791 Fax: 01553 617771
Email: office@mmges.co.uk
Web: www.mmges.co.uk



The information set forth in this brochure reflects our best knowledge at the time of issue.

This brochure is subject to change arising from new developments and findings.

We do not undertake any liability for the use of our products and information. Subject to our Terms and Conditions of Sale.