

S Z O I B A G

Gabions are proven and well established tools for the construction of river walls - revetments - drainage channels - canals - reservoirs - coastal defences - retaining walls and many other applications.

At MMG we understand the needs of Engineers and Contractors and are able to offer a comprehensive range



MMG with over 20 years experience in ground engineering, are able to provide the best in design suggestions, materials, service and environmentally acceptable solutions, in the use of gabions.

of gabions as standard. These units can be the solution for the majority of design situations. Customers who require non standard components can be supplied quickly and economically

Delivery

All gabions are supplied in fold flat form and comprise base, four sides, dividers (if required), lid and lacing wire.

Gabions offer an effective, low cost, easily installed method of construction.

Assembly

Components are held together using either butt welded rings, ring clips or helicoils to enable gabions to be erected quickly with readily available labour.

Guide to the weights of some suitable fills

Material	Average kg/cu. metre
Basalt	1650
Brick	1240
Broken Concrete	1340
Granite	1600
Limestone	1440
Sandstone	1390
Shingle	1500
Slag	1500

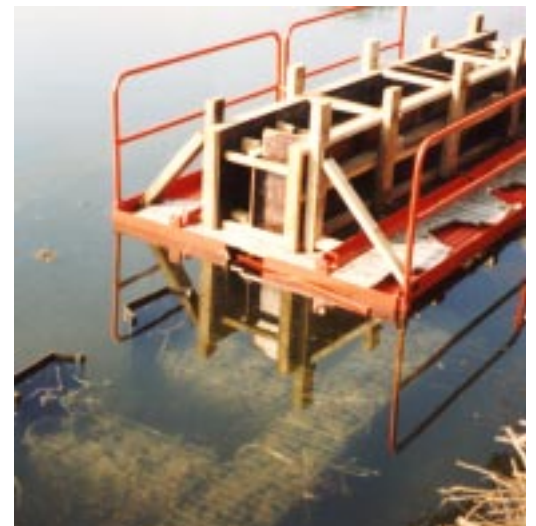


with custom made configurations.

Only minimal foundation preparation is usually required for gabions and they generally need little or no extra drainage considerations since they provide natural drainage and they can also allow for the establishment of vegetation.

The selection of the appropriate fill material can help structures to blend in with their natural surroundings.

Where geosynthetic fabrics are used in conjunction with gabion constructions, MMG are able to offer the most appropriate product from our wide range.



RETAINING
WALLS

REVETMENTS

RESERVOIRS

DRAINAGE
CHANNELS

FLOOD
PROTECTION

WATERWAYS

COASTAL
EROSION

CONTROL

CULVERTS

BRIDGE
ABUTMENTS

MARINAS

RIVER
TRAINING

SEA WALLS

SCOUR
PROTECTION

RAILWAYS

GROYNES

BUTTRESSES

Gabions form a flexible monolithic structure and can maintain total structural effectiveness even on land liable to differential settlement.

Our gabions are made from high tensile wire mesh electrically welded at every intersection. In situations where protection to the steel mesh is desirable we can supply sections assembled from hot dipped galvanised heavy duty steel wire.

Gabions arrive flat on site.

Assembled gabions are normally placed in-situ prior to filling.

Weldgrip mesh can be easily cut and folded to form mitre joints, angles or curves. Cuts made close to the welded joints of the mesh naturally form selvedge edges. These clean edges can then be wired neatly to adjacent faces.



Gabions should be overfilled by 20 mm - 50 mm to allow for settlement.

The dimensions of the fill material should exceed the mesh size.

▲ Helicoils, clips and tying wire are supplied with the gabions

Gabions Nominal Dimensions Length x Width x Height	Dividers	Capacity m ²
1.0 m x 1.0 m x 0.5 m	0	0.5
1.0 m x 1.0 m x 1.0 m	0	1.0
1.5 m x 1.0 m x 0.5 m	1	0.75
1.5 m x 1.0 m x 1.0 m	1	1.5
2.0 m x 1.0 m x 0.5 m	1	1.0
2.0 m x 1.0 m x 1.0 m	1	2.0
3.0 m x 1.0 m x 0.5 m	2	1.5
3.0 m x 1.0 m x 1.0 m	2	3.0
4.0 m x 1.0 m x 0.5 m	3	2.0
4.0 m x 1.0 m x 1.0 m	3	4.0

Mattresses Nominal Dimensions Length x Width x Height	Dividers	Capacity m ²
3.0 m x 2.0 m x 0.15 m	2	0.9
3.0 m x 2.0 m x 0.225 m	2	1.35
3.0 m x 2.0 m x 0.3 m	2	1.8
6.0 m x 2.0 m x 0.15 m	5	1.8
6.0 m x 2.0 m x 0.225 m	5	2.7
6.0 m x 2.0 m x 0.3 m	5	3.6

Weldgrip Gabions & Mattresses

Mesh specifications - 75 mm x 75 mm

Choice of wire gauge - 3.0 mm-4.0 mm-5.0 mm

Finished in - natural colour or hot dipped, galvanised to BS729, Bezinal coated or plastic coated with galvanised core.

When you use gabions from MMG, our technical services department will be available to provide advice on product performance and design techniques



"Dedicated to Soil Engineering"

MMG Civil Engineering Systems Ltd

St. Germans King's Lynn

Norfolk PE34 3ES England

Telephone: 01553 617791

Fax: 01553 617771

E-mail: office@mmgces.demon.co.uk