



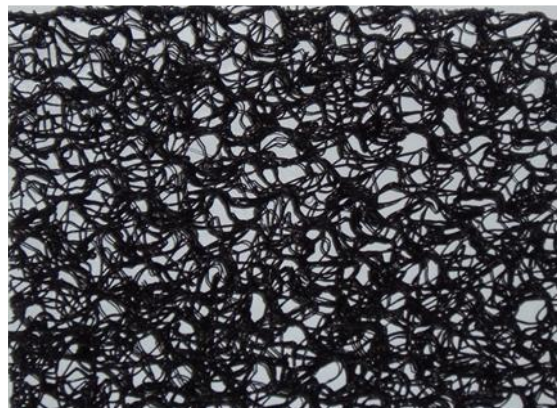
Verdamat 500gm² Permanent Erosion Control Matting Specification Sheet

Product Specification

VERDAMAT 500gm² consists of a flexible lightweight three dimensional structure of entangled and heat bonded black polypropylene filaments reinforced with a polypropylene mesh to create a long lasting, environmentally friendly, flexible erosion control mat in combination with natural vegetation.

VERDAMAT 500gm² provides both an effective erosion control surface and a vegetative root reinforcement layer. It is a non-biodegradable mat intended to assist permanent vegetation growth.

Its main application is to protect newly laid topsoil in the formation and repair of embankments to rivers, spillways, reservoirs, canals, highways, railways, taxiway edges, etc. A grid reinforced version is available for heavy duty applications.



Size

Length:	25 Metres
Width:	2.2 Metres
Weight:	28kg
Roll diameter:	0.7 Metres
Overlap allowance:	4.5%

Properties

Type:	Three dimensional open matrix with mesh	
Thickness at 2 kPa (mm):	20	EN ISO 9863-1
Mass/unit area (g/m ²):	500	EN ISO 9864
Ult tensile strength MD (kN/m):	1.35	EN ISO 10319
Ult tensile strength CMD (kN/m):	0.85	EN ISO 10319
Elongation (%):	30 to 30	EN ISO 10319
Life expectancy (yrs):	up to 120 years	
Fire resistance:	Good when soil filled	

- The values given are indicative and correspond to nominal results obtained in our laboratories and testing institutes. In line with our policy of continuous improvement the right is reserved to make changes without notice at any time. The thickness stated is the product thickness as manufactured, the product is compressed when rolled for delivery and the extent of recovery will depend on time.
- Final determination of the suitability of any information is the sole responsibility of the user. Verdant Solutions Ltd would be pleased to discuss the use of this or any other product but responsibility for selection of a material and its application in any specific project remains with the user.
- The standard product is intended to be sufficiently durable in European climates to allow new vegetative growth to develop through the open structure of the mat to provide the long term weathering protection.
- A COSHH certificate is available on request.

Specialists in Geosynthetics & Erosion Control