



Silt Curtain Specification Sheet

Silt Curtains are manufactured in a range of standard sizes from specially woven ribbon thread material. The standard design incorporates a floating top edge, a weighted bottom edge which maintains the curtain geometry in the water and a system of lacing to join adjacent curtains together to create installations of virtually any length.

Silt Curtains are usually used to mitigate silt movement through water caused by major disturbance such as civil engineering works but variants have also been used to control fish movement, for biomanipulation, for macrophyte regeneration and even for bulk silt retention in dredging operations.

How do Silt Curtains work?

Contrary to popular misconception, a Silt Curtain does not work as a filter, and should not be used as such. Used as a simple filter, the fabric soon blinds rendering the Screen useless and worse still, building up significant hydrostatic forces which can impede flow and create unsustainable forces in any retention structure or installation.

Silt Curtains work by averaging out water flow across a very large area and thus reducing flow to very low velocities. At reduced flow velocities, entrained silts can drop out of suspension, unlike in high velocity regimes, however local, where velocity and turbulence keep silt in suspension, entraining and carrying it with the flow.



In applications with potentially very high flows, it is important not to configure the Curtain in such a way that a restriction to total flow might occur if the Curtain became blinded with silt or aquatic growth or both.

For example, in a situation where a tributary enters a main stream and it is desired to minimise silt entry into the main stream then the Curtain should be deployed along the edge of the mainstream, across the tributary but open at the downstream end. A successful deployment might involve a 40m long Curtain across a 2m wide tributary. This huge increase in area dictates that velocities will be greatly reduced with consequent drop-out of silt.

On no account should the Silt Curtain be stretched across a mainstream or any main flow-path.

Specialists in Geosynthetics & Erosion Control

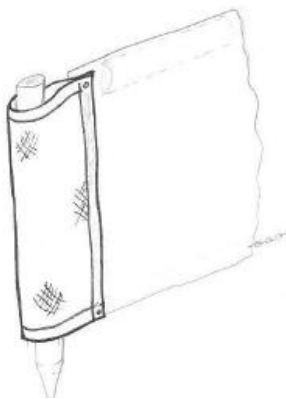
Silt Curtain specification continued.....

Silt Curtains and Termination Accessories are available in a variety of standard sizes. Orders can consist of any combination to suit your specific application. All Silt Curtains come complete with installation instructions which recommend best practice for ease of installation. Please contact us if you have any questions or to discuss your project .

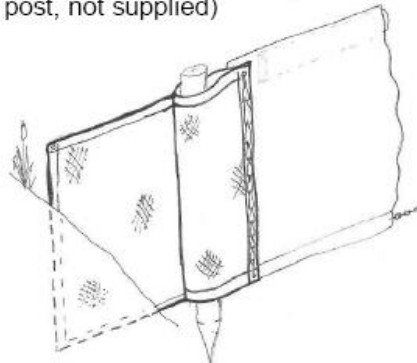
Item		Max Site Dimensions		Product Dimensions		Shipping Dimensions	
		Water Depth	Span Distance	Depth	Length	Weight	L x W x H
Silt Curtains	2 x 10	1.9m	9m	2m	10m	20kg	1.7m x 1/2m x 1/2m
	2 x 20	1.9m	18m	2m	20m	40kg	1.7m x 1m x 1/2m
	4.5 x 10	4.4m	9m	4.5m	10m	40kg	2.2m x 1m x 1/2m
	4.5 x 20	4.4m	18m	4.5m	20m	80kg	2.2m x 1 1/2m x 1/2m
Terminations	Type 1	1.9m	1/2m	2m	1/2m	2kg	1/2m x 1/2m x 100mm
		4.4m	1/2m	4.5m	1/2m	2kg	1m x 1/2m x 100mm
	Type 2	1.9m	3 1/2m	2m	3 1/2m	5kg	1m x 1/2m x 100mm
		4.4m	3 1/2m	4.5m	3 1/2m	5kg	1m x 1/2m x 100mm
	Type 3	1.9m	1/2m	2m	1/2m	2kg	1/2m x 1/2m x 100mm
		4.4m	1/2m	4.5m	1/2m	2kg	1m x 1/2m x 100mm

Three *Termination Types* are available to ensure *Silt Curtains* are positively attached at the waters edge

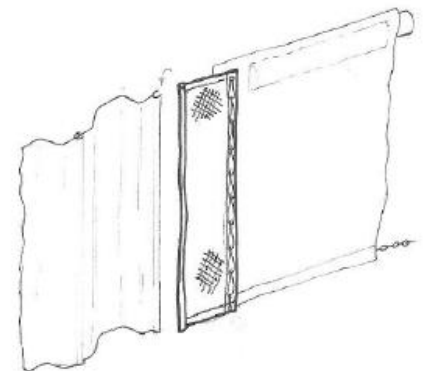
- 1** Post Termination (PT) - Sleeve slides over post and attached to end of *Silt Curtain*



- 2** Post & Panel Termination (PPT) - Sleeve slides over post, fabric panel is buried in the bank and attached to end of *Silt Curtain* (up to 100mm dia post, not supplied)



- 3** Pile & Keder Termination (PKT) - Pile driven into the bank, keder slides into piling and attached to the end of *Silt Curtain*



Specialists in Geosynthetics & Erosion Control