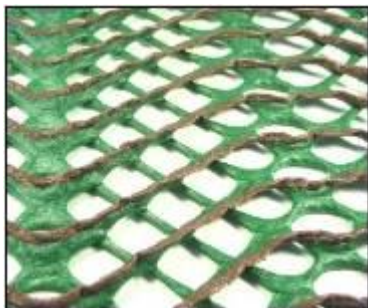




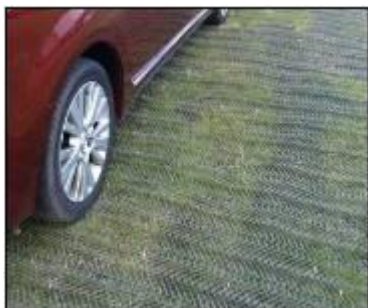
Grass Protection Mesh Specification Sheet



Grass Protection Mesh is a grass reinforcement net obtained by co-extrusion of HDPE (High density polyethylene) to give structure to the product and EVA (Ethylene-vinyl acetate) to increase slip resistance of vehicles while improving their traction.

Application:

Reinforcement of grassed parking areas and access routes or lawns used by a high number of pedestrians for both temporary and permanent application, such as:-



- Garage and areas for trailers and caravan parking
- Pedestrian walkways
- Green Driveways
- All surfaces which are prone to damage of the grass surface and to the formation of ruts

Physical specification	Test Method	Unit	GP Mesh 1000	GP Mesh 1400	GP Mesh 1800
Polymer type			Polyethylene + EVA (Foam)	Polyethylene + EVA (Foam)	Polyethylene + EVA (Foam)
Structure			Rhomboidal	Rhomboidal	Rhomboidal
Colour			Green & Brown	Green & Brown	Green & Brown
Packaging			Rolls	Rolls	Rolls
Dimensional specification					
Unit weight		g/m ²	1000.0	1400.0	1800.0
Roll width		m	2	2	2
Roll length		m	20.0	20.0	20.0
Area coverage		m ²	40.0	40.0	40.0
Roll diameter		m	0.51	0.52	0.59
Roll weight		kg	40.0	0.56	72.0
Roll volume		m ³	0.55	0.54	0.70
Technical specification					
MD Tensile strength	ISO 10319	kN/m	6.5	9.5	11.5
MD Elongation	ISO 10319	%	25.0	25.0	25.0
Residual thickness at 500 kPa	ASTM D 6364	%	50.0	50.0	55.0

Specialists in Geosynthetics & Erosion Control